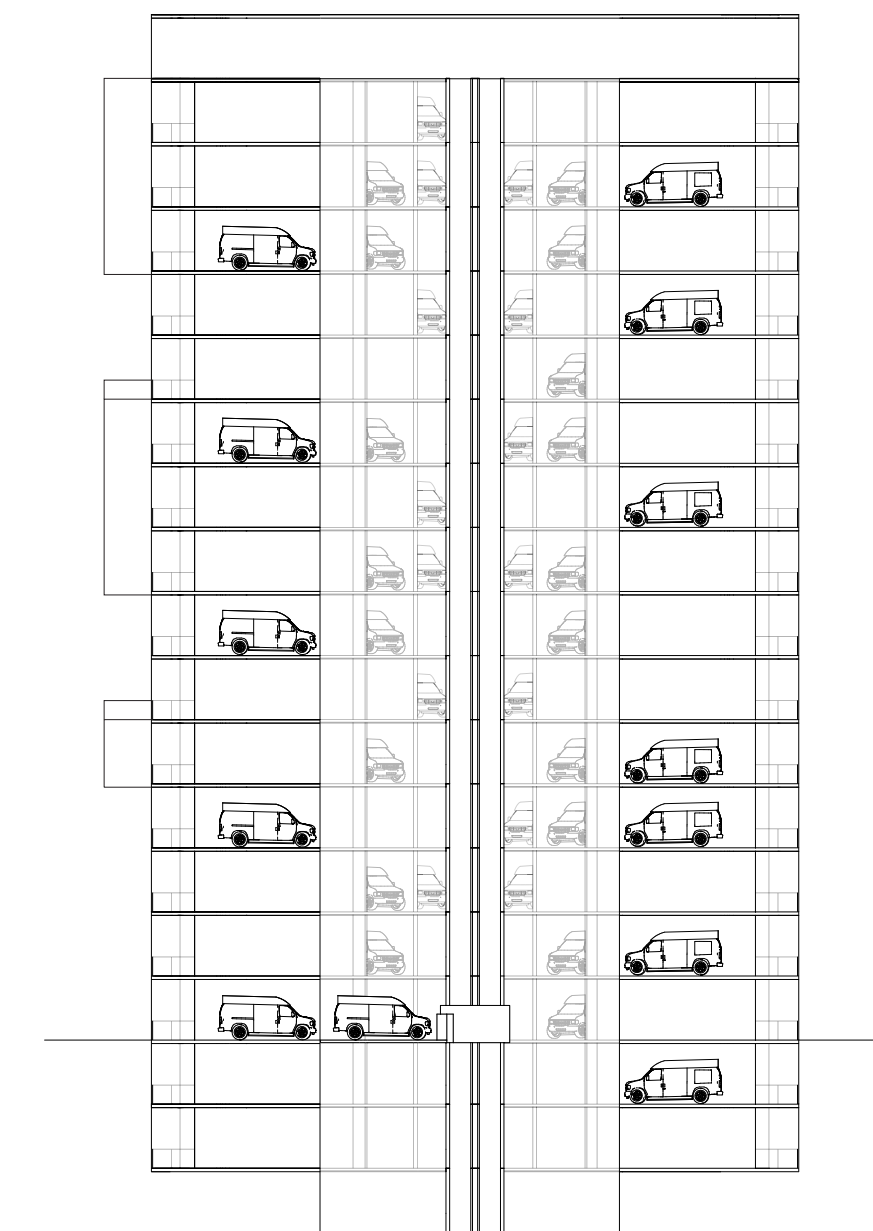
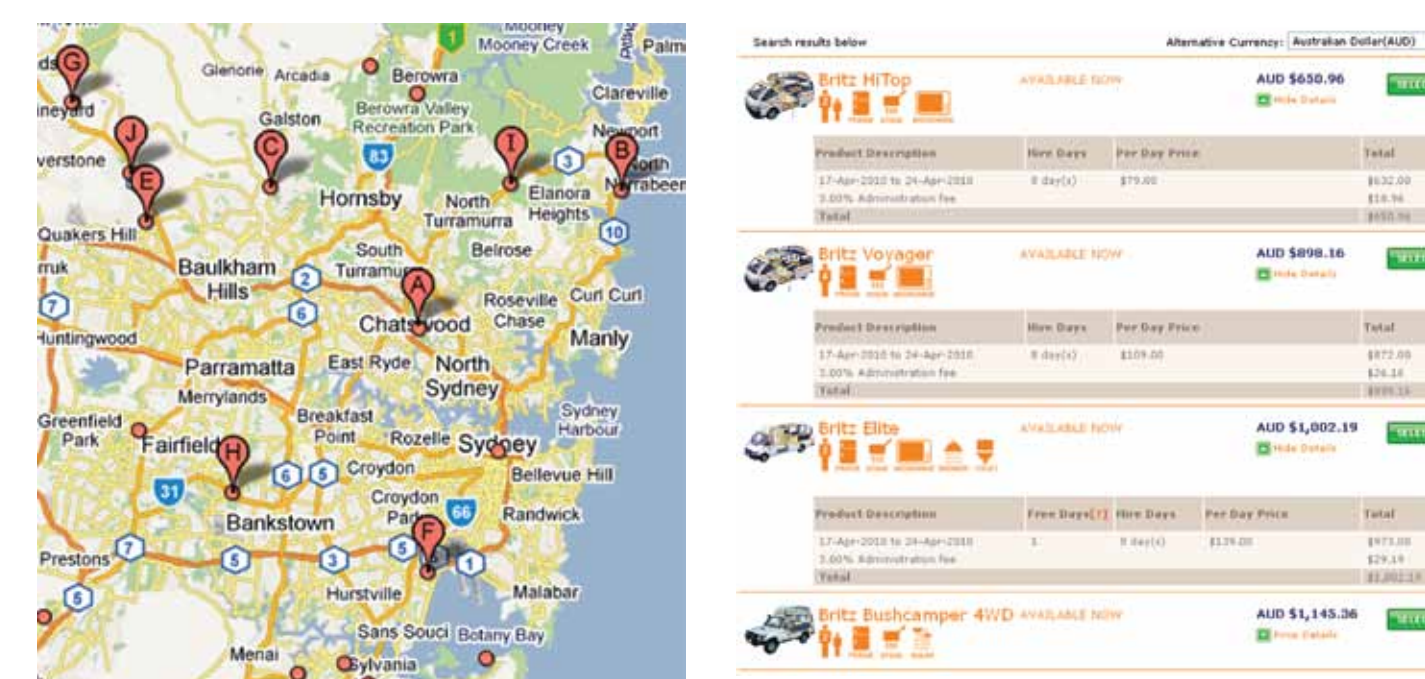


[illegible]

A photograph showing a person walking across a suspension bridge. The bridge is made of a mesh of ropes and is suspended over a dense forest. The person is wearing a green shirt and a backpack. The bridge is made of a mesh of ropes and is suspended over a dense forest. The person is wearing a green shirt and a backpack.

An aerial photograph of a park area, overlaid with a network of red lines. The red lines form a complex web, connecting various points across the park, including the tennis courts, the central building, and the surrounding green spaces. The map shows a variety of park features: two tennis courts in the bottom left, a large central building with a circular roof, a playground area with colorful equipment, and several walking paths. The red lines likely represent a proposed or existing network of paths or boundaries for a specific project.

- Solve one of the big issues in Surry Hills
- Reinforce Tourism Industry
- Get a unique Accommodation